

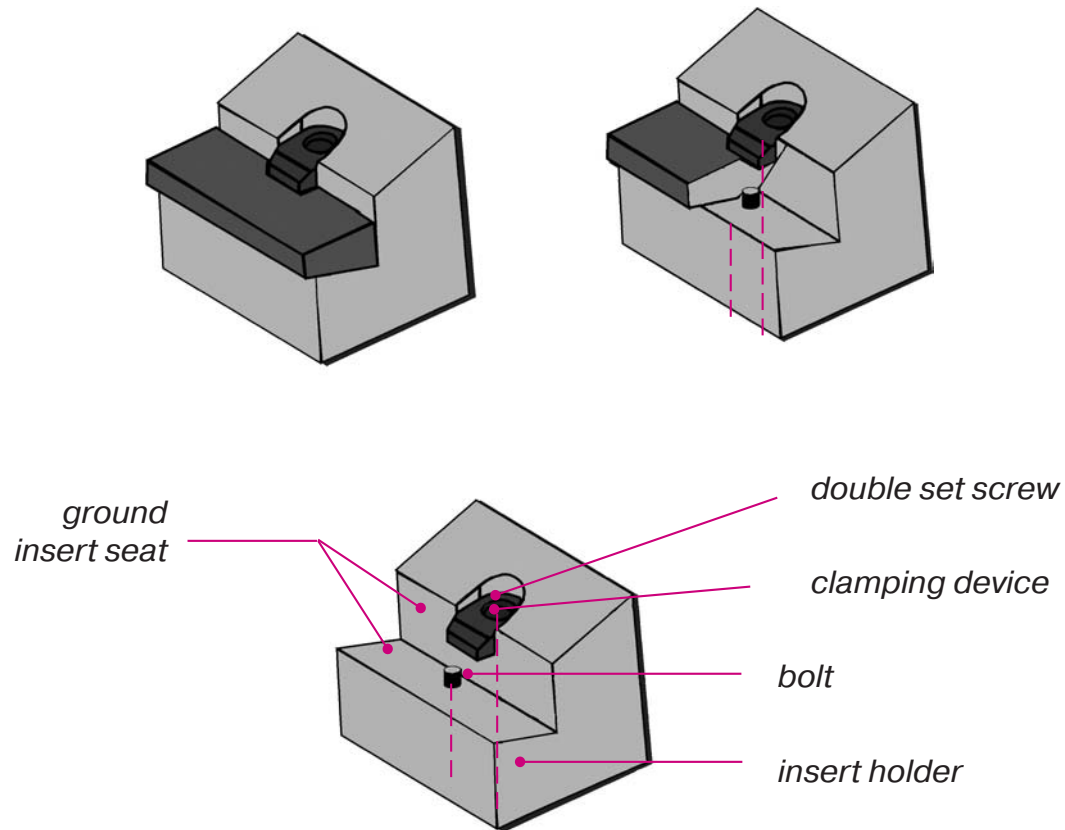
## Platform Tools for the Production of Profile Lathe Parts

- Highest changing accuracy
- Increase your productivity
- Express service

## **Content**

Product description	Page 3
“Profile – Center” – grinding service	Page 4
Flatform inserts (carbides)	Page 5
Device for re-sharpening the flatform inserts	Page 6
Shank-type cutting Tool	Page 7
Basic Holders for Gildemeister and Schütte automatic lathes	Page 8 / 9
Basic Holders for Tornos automatic lathes	Page 10 / 11
Basic Holders for Index and Traub automatic lathes	Page 12
Shank type cutting Tool / Flatform inserts (extra flat)	Page 13
Grooving Tool / with 3-cutting edges	Page 14
Special tools for flatform inserts	Page 15
Polygon milling cutters	Page 16 / 17
Spare parts	Page 18
Questionnaire for grinding profiles	Page 19

## The bolt makes the difference



Leistritz set a landmark in the history of profile turning tools with the invention of a changeable profile plate. Over the past few years we have improved the PLATFORM tool and have increased the different holders in our stock.

The patented Leistritz PLATFORM tool changing system is characterized by a ground insert seat and a bolt to fix the position of the insert.

This combination makes it possible to change the insert inside the lathe without having to move the insert holder. The high precision of the ground insert seat guarantees the location of the profiled insert more exactly than presetting.

The simple clamping system, without losable parts, in combination with the fix-bolt, enables every worker to change the inserts quickly and precisely.

Moreover, the clamping device can be opened from both sides – from the insert side and the insert holder side through the holder. That makes it easier to change the inserts within the narrow space of the machine.

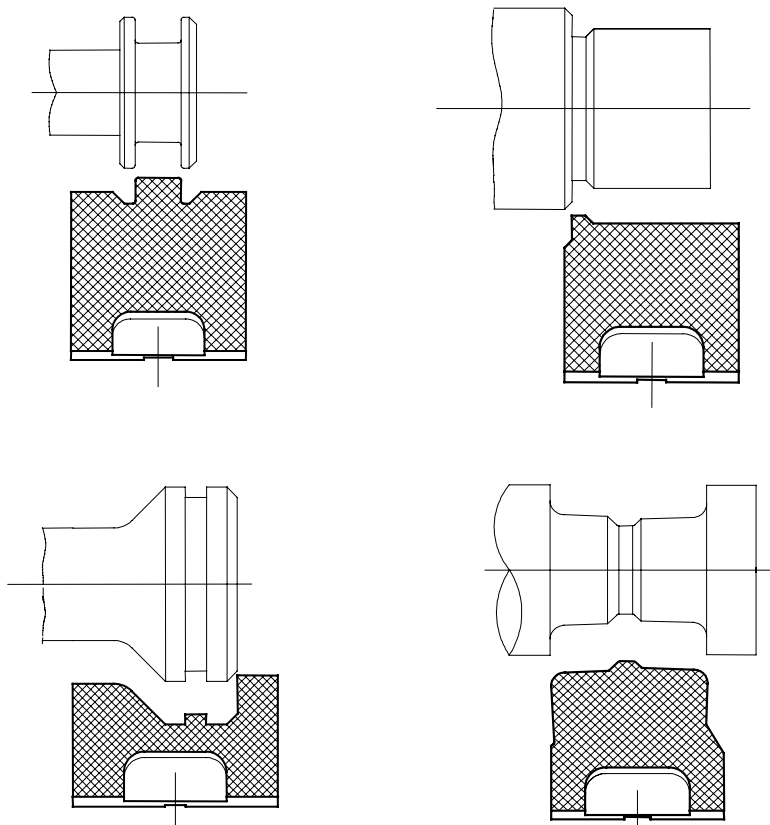
Due to the wide range of PLATFORM tools in our stock and our considerable experience, we can always offer you the best combination of economical price for the tool and the possibility of re-sharpening the inserts.

## ***"Profile-Center" grinding service***

The Leistriz "Profil-Center" designs and manufactures the best grooving tool for your demands. We can increase your productivity.

Our well-equipped production facility always guarantees the highest quality of tools from one single insert to serial production of tools.

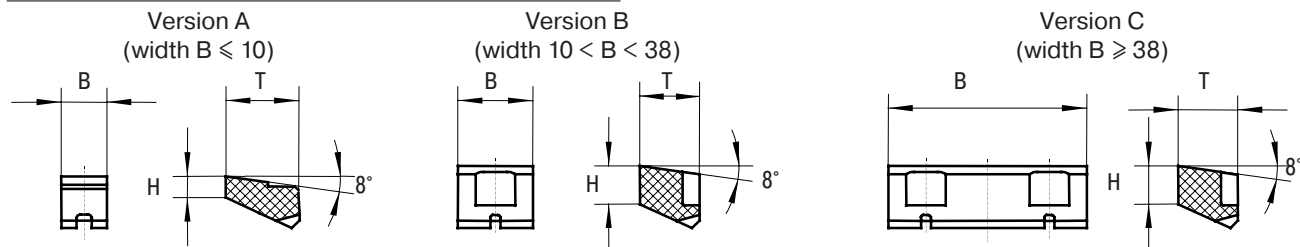
### ***Examples of profiled FLATFORM inserts:***



***Test our Tools***

The questionnaire on page 19 will help you with your inquiry

## Flatform inserts



Order number	Dimensions [mm]			Version
	B	H	T	
W 3006-0300 0000 N	6	3	12	A
W 3008-0300 0000 N	8	3	12	A
W 3010-0300 0000 N	10	3	12	A
W 3012-0300 0000 N	12	3	12	B
W 3014-0300 0000 N	14	3	12	B
W 3016-0300 0000 N	16	3	12	B
W 3018-0300 0000 N	18	3	12	B
W 3020-0300 0000 N	20	3	12	B
W 3025-0300 0000 N	25	3	12	B
W 3028-0300 0000 N	28	3	12	B
W 3032-0300 0000 N	32	3	12	B
W 3038-0300 0000 N	38	3	12	C
W 3045-0300 0000 N	45	3	12	C
W 3010-0800 0000 N	10	8	12	B
W 3012-0800 0000 N	12	8	12	B
W 3014-0800 0000 N	14	8	12	B
W 3016-0800 0000 N	16	8	12	B
W 3018-0800 0000 N	18	8	12	B
W 3020-0800 0000 N	20	8	12	B
W 3022-0800 0000 N	22	8	12	B
W 3025-0800 0000 N	25	8	12	B
W 3032-0800 0000 N	32	8	12	B
W 3038-0800 0000 N	38	8	12	C
W 3045-0800 0000 N	45	8	12	C
W 3010-0715 0000 N	10	7	15	B
W 3012-0715 0000 N	12	7	15	B
W 3014-0715 0000 N	14	7	15	B
W 3016-0715 0000 N	16	7	15	B
W 3020-0715 0000 N	20	7	15	B
W 3025-0715 0000 N	25	7	15	B
W 3032-0715 0000 N	32	7	15	B
W 3038-0715 0000 N	38	7	15	C
W 3045-0715 0000 N	45	7	15	C
W 3060-0715 0000 N	60	7	15	C
W 3025-2018 0000 N	25	20	18	B
W 3032-2018 0000 N	32	20	18	B

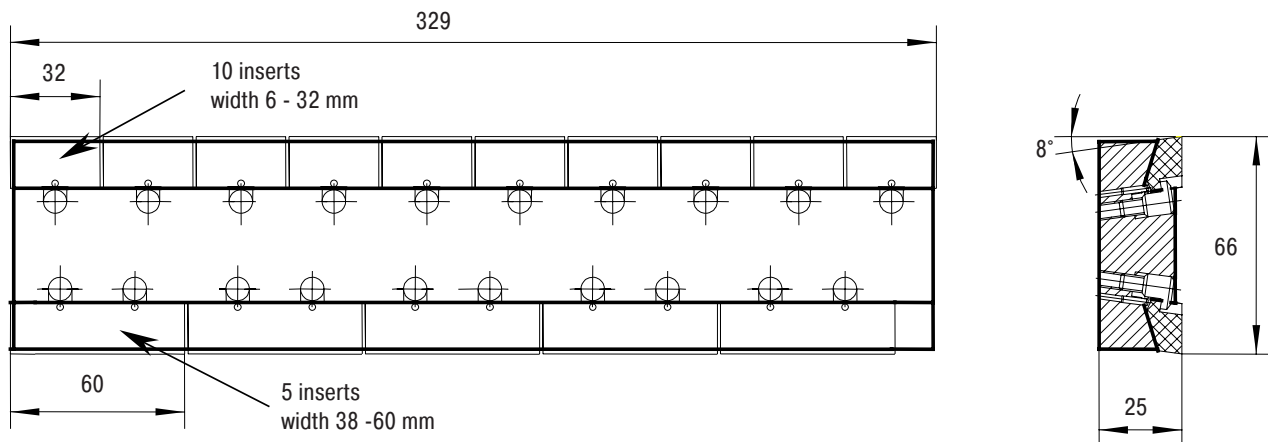
See the price list for types of carbide and prices

## **Fixture for re-sharpening the inserts**

You can regrind the chip surface of several profiled FLATFORM inserts together with the aid of this re-sharpening fixture. It can be fixed on the table of a surface grinding machine.

Re-sharpening several tools together gives all inserts the same level of the cutting edge. In this way the tool holder doesn't have to be adjusted while changing the insert.

The drawing is only for example. We can adjust it to your demands.

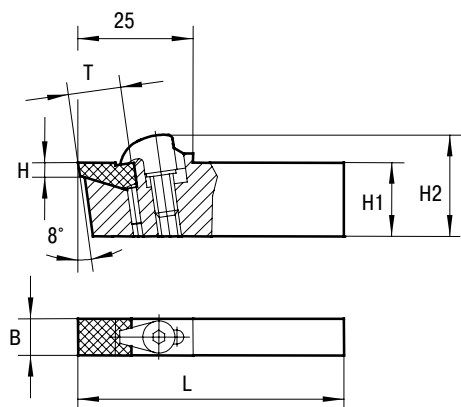


**Moreover, we also offer a service for re-sharpening the FLATFORM inserts!**

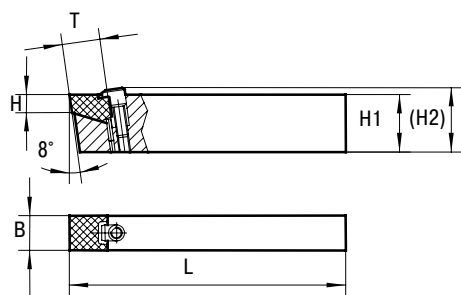
**Please contact us!**

## Shank type cutting tool

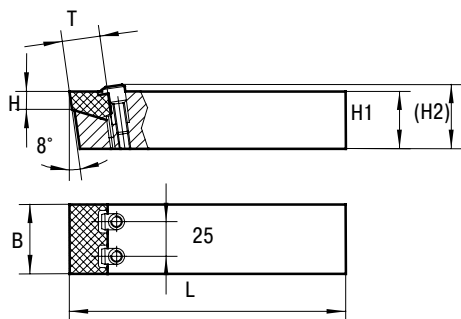
Version A (width  $\leq 10$ )



Version B (10 < width < 38)



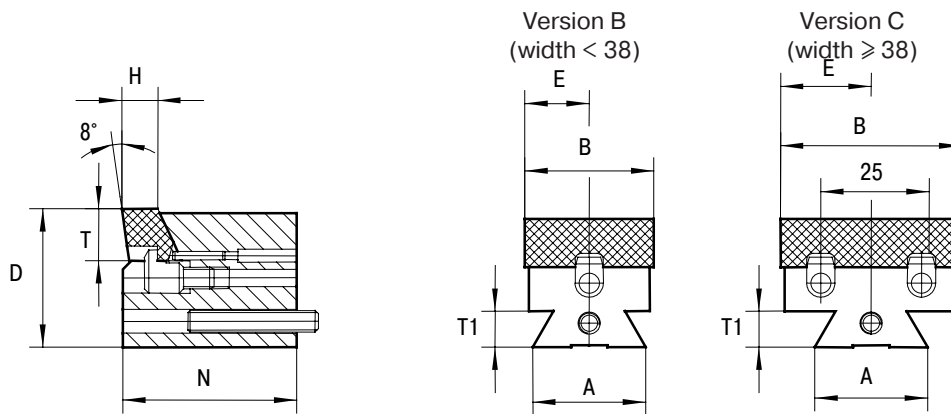
Version C (width  $\geq 38$ )



Order number	Dimensions [mm]						Version
	B	H1	H2	L	H	T	
H 3006-1606 0003 N	6	16	21	125	3	12	A
H 3008-1608 0003 N	8	16	23	125	3	12	A
H 3010-1610 0003 N	10	16	23	125	3	12	A
H 3012-1212 0003 N	12	12	14	150	3	12	B
H 3012-1612 0003 N	12	16	14	150	3	12	B
H 3012-2012 0003 N	12	20	22	150	3	12	B
H 3012-2512 0003 N	12	25	27	150	3	12	B
H 3014-1614 0003 N	14	16	18	150	3	12	B
H 3014-2014 0003 N	14	20	22	150	3	12	B
H 3014-2514 0003 N	14	25	27	150	3	12	B
H 3016-1616 0003 N	16	16	18	150	3	12	B
H 3016-2016 0003 N	16	20	22	150	3	12	B
H 3016-2516 0003 N	16	25	27	150	3	12	B
H 3020-2020 0003 N	20	20	22	150	3	12	B
H 3020-2520 0003 N	20	25	27	150	3	12	B
H 3025-2525 0003 N	25	25	27	150	3	12	B
H 3045-2545 0003 N	45	25	27	150	3	12	C
H 3014-2014 0008 N	14	20	--	150	8	12	B
H 3014-2514 0008 N	14	25	--	150	8	12	B
H 3016-2016 0008 N	16	20	--	150	8	12	B
H 3016-2516 0008 N	16	25	--	150	8	12	B
H 3020-2020 0008 N	20	20	--	150	8	12	B
H 3020-2520 0008 N	20	25	--	150	8	12	B
H 3025-2025 0008 N	25	20	--	150	8	12	B
H 3025-2525 0008 N	25	25	--	150	8	12	B
H 3025-3225 0008 N	25	32	--	150	8	12	B
H 3032-2032 0008 N	32	20	--	150	8	12	B
H 3032-2532 0008 N	32	25	--	150	8	12	B
H 3032-3232 0008 N	32	32	--	150	8	12	B
H 3045-2545 0008 N	45	25	--	150	8	12	C
H 3010-2010 0715 N	10	20	--	150	7	15	A
H 3014-2014 0715 N	14	20	--	150	7	15	B
H 3014-2514 0715 N	14	25	--	150	7	15	B
H 3016-2016 0715 N	16	20	--	150	7	15	B
H 3020-2020 0715 N	20	20	--	150	7	15	B
H 3025-2025 0715 N	25	20	--	150	7	15	B
H 3032-2532 0715 N	32	25	--	150	7	15	B
H 3045-2045 0715 N	45	20	--	150	7	15	C
H 3060-2560 0715 N	60	25	--	150	7	15	C

Other dimensions on request

**N for Flatform basic holder GILDEMEISTER and SCHÜTTE automatic lathes**

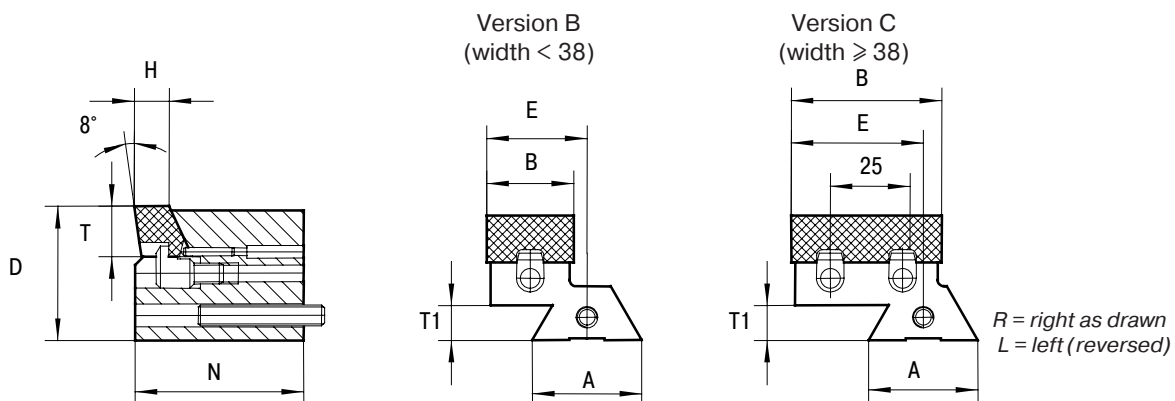


Order number	Dimensions [mm]								Version
	A	N	T1	D	B	H	T	E	
H 3016-0812 A20 N30	20	30	7	32	16	8	12	8	B
H 3020-0812 A20 N30	20	30	7	32	20	8	12	10	B
H 3025-0812 A20 N30	20	30	7	32	25	8	12	12.5	B
H 3025-0812 A20 N40	20	40	7	32	25	8	12	12.5	B
H 3032-0812 A20 N40	20	40	7	32	32	8	12	16	B
H 3025-0812 A20 N50	20	50	7	32	25	8	12	12.5	B
H 3014-0812 A28 N30	28	30	9	32	14	8	12	7	B
H 3025-0812 A28 N30	28	30	9	32	25	8	12	12.5	B
H 3014-0812 A28 N40	28	40	9	32	14	8	12	7	B
H 3016-0812 A28 N40	28	40	9	32	16	8	12	8	B
H 3020-0812 A28 N40	28	40	9	32	20	8	12	10	B
H 3025-0812 A28 N40	28	40	9	32	25	8	12	12.5	B
H 3032-0812 A28 N40	28	40	9	32	32	8	12	16	B
H 3038-0812 A28 N40	28	40	9	32	38	8	12	19	C
H 3045-0812 A28 N40	28	40	9	32	45	8	12	22.5	C
H 3016-0715 A28 N40	28	40	9	32	16	7	15	8	B
H 3025-0715 A28 N40	28	40	9	32	25	7	15	12.5	B
H 3032-0715 A28 N40	28	40	9	32	32	7	15	16	B
H 3045-0715 A28 N40	28	40	9	32	45	7	15	22.5	C
H 3020-0812 A28 N50	28	50	9	32	20	8	12	10	B
H 3025-0812 A28 N50	28	50	9	32	25	8	12	12.5	B
H 3032-0812 A28 N50	28	50	9	32	32	8	12	16	B
H 3045-0812 A28 N50	28	50	9	32	45	8	12	22.5	C
H 3032-0715 A28 N50	28	50	9	32	32	7	15	16	B
H 3032-0812 A40 N40	40	40	11	40	32	8	12	16	B
H 3045-0812 A40 N45	40	45	11	40	45	8	12	22.5	C
H 3032-0715 A40 N50	40	50	11	32	32	7	15	16	B
H 3045-0715 A40 N50	40	50	11	40	45	7	15	22.5	C

Other dimensions on request



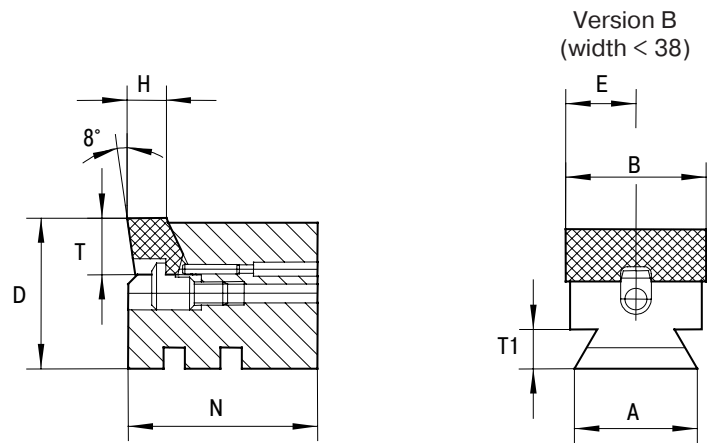
**R/L for Flatform basic holder GILDEMEISTER and SCHÜTTE automatic lathes**



Order number	Dimensions [mm]								Version
	A	N	T1	D	B	H	T	E	
H 3025-0812 A20 R 30	20	30	7	32	25	8	12	18	B
H 3014-0812 A20 R 40	20	40	7	32	14	8	12	12.5	B
H 3014-0812 A20 R 50	20	50	7	32	14	8	12	12.5	B
H 3025-0812 A20 L 50	20	50	7	32	25	8	12	18	B
H 3014-0812 A28 R 30	28	30	9	32	14	8	12	18	B
H 3016-0812 A28 R 30	28	30	9	32	16	8	12	18	B
H 3020-0812 A28 R 30	28	30	9	32	20	8	12	18	B
H 3014-0812 A28 R 40	28	40	9	32	14	8	12	18	B
H 3016-0812 A28 R 40	28	40	9	32	16	8	12	18	B
H 3020-0812 A28 R 40	28	40	9	32	20	8	12	18	B
H 3025-0812 A28 R 40	28	40	9	32	25	8	12	18	B
H 3014-0812 A28 R 50	28	50	9	32	14	8	12	18	B
H 3025-0812 A28 R 50	28	50	9	32	25	8	12	18	B
H 3025-0812 A28 L 50	28	50	9	32	25	8	12	18	B
H 3032-0812 A28 R 50	28	50	9	32	32	8	12	18	B
H 3014-0812 A40 R 50	40	50	11	35	14	8	12	22.5	B
H 3025-0812 A40 R 50	40	50	11	35	25	8	12	22.5	B
H 3032-0812 A40 R 50	40	50	11	35	32	8	12	22.5	B
H 3025-0715 A40 R 50	40	50	11	40	25	7	15	30	C
H 3025-0715 A40 L 50	40	50	11	40	25	7	15	30	C
H 3038-0812 A50 R 45	50	45	13	40	38	8	12	34.5	C
H 3045-0812 A50 R 45	50	45	13	40	45	8	12	31	C
H 3014-0812 A50 R 50	50	50	13	40	14	8	12	27.5	B
H 3025-0812 A50 R 50	50	50	13	40	25	8	12	27.5	B

Other dimensions on request

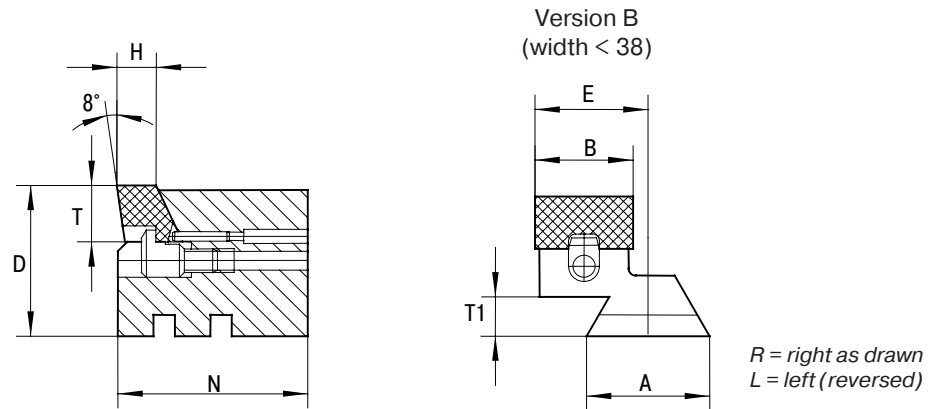
**N** for Flatform basic holder **Tornos** automatic lathes



Order number	Dimensions [mm]								Version
	A	N	T1	D	B	H	T	E	
H 3014-0800 0422 N	22	35	7,5	30	14	8	12	7	B
H 3016-0800 0422 N	22	35	7,5	30	16	8	12	8	B
H 3020-0800 0422 N	22	35	7,5	30	20	8	12	10	B
H 3025-0800 0422 N	22	35	7,5	30	25	8	12	12.5	B

Other dimensions on request

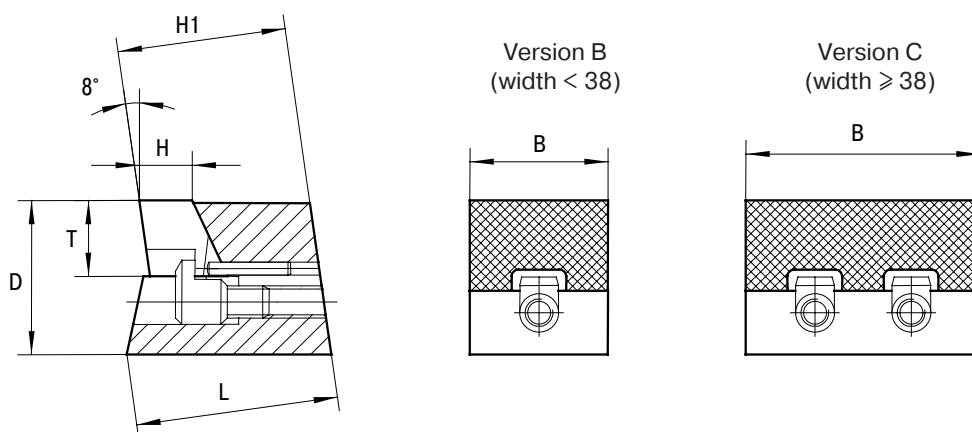
**R/L for flatform inserts for Tornos automatic lathes**



Order number	Dimensions [mm]								Version
	A	N	T1	D	B	H	T	E	
H 3014-0800 0422 R	22	35	7.5	30	14	8	12	22	B
H 3014-0800 0422 L	22	35	7.5	30	14	8	12	22	B
H 3016-0800 0422 R	22	35	7.5	30	16	8	12	23	B
H 3016-0800 0422 L	22	35	7.5	30	16	8	12	23	B
H 3018-0800 0422 L	22	35	7.5	30	18	8	12	23	B
H 3020-0800 0422 R	22	35	7.5	30	20	8	12	22	B
H 3020-0800 0422 L	22	35	7.5	30	20	8	12	22	B
H 3025-0800 0422 R	22	35	7.5	30	25	8	12	22	B
H 3025-0800 0422 L	22	35	7.5	30	25	8	12	22	B

Other dimensions on request

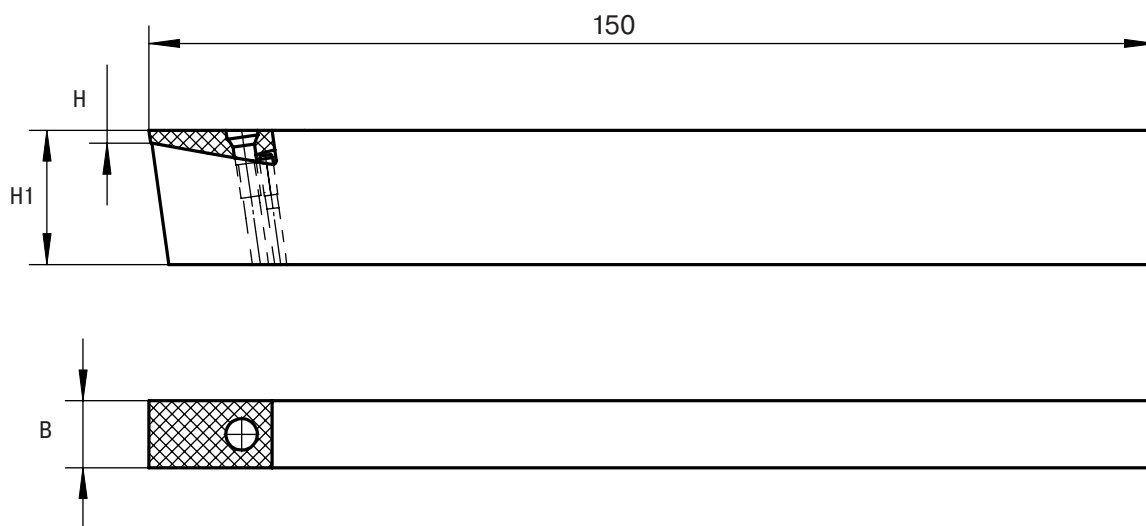
## N for flatform inserts for INDEX and TRAUB automatic lathes



Order number	TYP	Dimensions [mm]					
		B	H	T	L	D	H1
H 3014-0300 0125	B 25	14	3	12	24	20	20
H 3020-0300 0125	B 25	20	3	12	24	20	20
H 3025-0300 0125	B 25	25	3	12	24	20	20
H 3014-0800 0125	B 25	14	8	12	24	20	20
H 3016-0800 0125	B 25	16	8	12	24	20	20
H 3020-0800 0125	B 25	20	8	12	24	20	20
H 3025-0800 0125	B 25	25	8	12	24	20	20
H 3032-0800 0125	B 25	32	8	12	24	20	20
H 3038-0800 0125	B 25	38	8	12	24	20	20
H 3045-0800 0125	B 25	45	8	12	24	20	20
H 3014-0300 0142	B 42	14	3	12	26	26	20
H 3016-0300 0142	B 42	16	3	12	26	26	20
H 3020-0300 0142	B 42	20	3	12	26	26	20
H 3025-0300 0142	B 42	25	3	12	26	26	20
H 3012-0800 0142	B 42	12	8	12	26	26	20
H 3014-0800 0142	B 42	14	8	12	26	26	20
H 3016-0800 0142	B 42	16	8	12	26	26	20
H 3020-0800 0142	B 42	20	8	12	26	26	20
H 3025-0800 0142	B 42	25	8	12	26	26	20
H 3032-0800 0142	B 42	32	8	12	26	26	20
H 3045-0800 0142	B 42	45	8	12	26	26	20
H 3016-0715 0142	B 42	16	7	15	26	29	20
H 3020-0715 0142	B 42	20	7	15	26	29	20
H 3025-0715 0142	B 42	25	7	15	26	29	20
H 3032-0715 0142	B 42	32	7	15	26	29	20
H 3038-0715 0142	B 42	38	7	15	26	29	20
H 3045-0715 0142	B 42	45	7	15	26	29	20
H 3060-0715 0142	B 42	60	7	15	26	29	20

Other dimensions on request

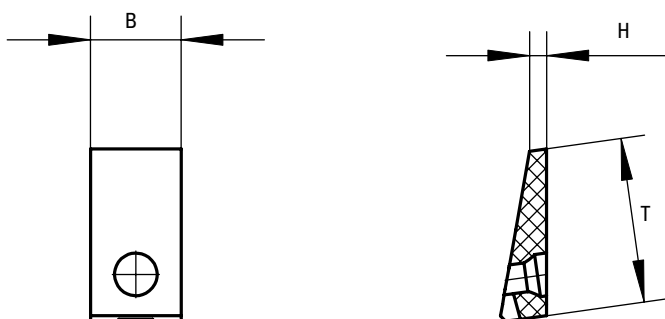
## Shank type cutting tool (extra flat)



Order number	Dimensions [mm]			Spare parts		
	B	H1	H	Screw	Bolt	Key
H 3110-1010 0002 N	10	10	1.9	7762157	∅ 2 x 6	7762160
H 3110-1610 0002 N	10	16	1.9	7762157	∅ 2 x 6	7762160
H 3110-2010 0002 N	10	20	1.9	7762157	∅ 2 x 6	7762160
H 3112-1012 0002 N	12	10	1.9	7762157	∅ 2 x 8	7762160
H 3112-1612 0002 N	12	16	1.9	7762157	∅ 2 x 8	7762160
H 3112-2012 0002 N	12	20	1.9	7762157	∅ 2 x 8	7762160
H 3114-1014 0002 N	14	10	1.9	7762157	∅ 2 x 8	7762160

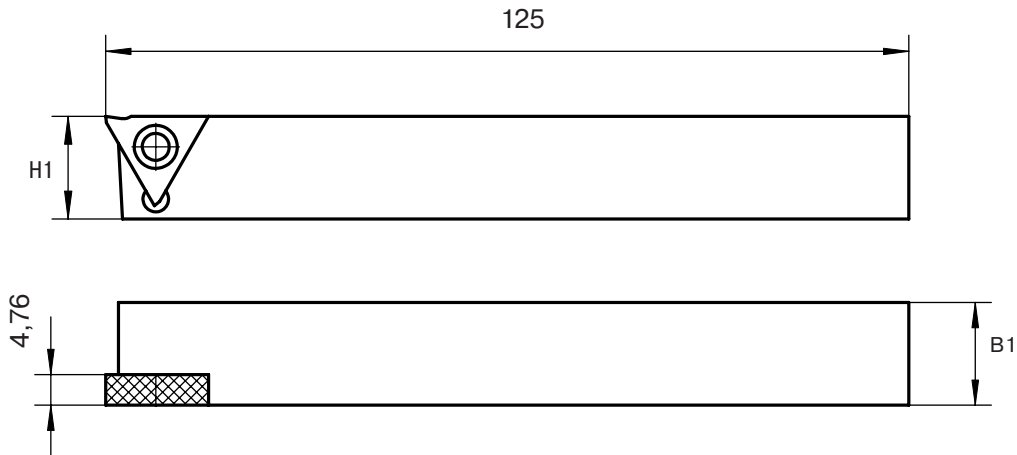
Other dimensions on request

## Platform inserts (extra flat)



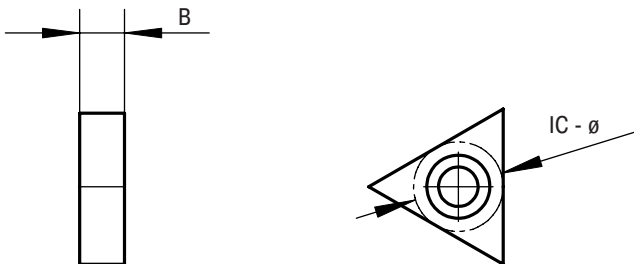
Order number	Dimensions [mm]		
	B	H	T
W 3110-0200 0000 N	10	1.9	18
W 3112-0200 0000 N	12	1.9	12
W 3114-0200 0000 N	14	1.9	14

## Grooving tool with 3 cutting edges



Order number	Dimensions [mm]		Spare parts	
	B1	H	Screw	Key
SK 5400-1412 R	12	14	7764038	7762161
SK 5400-1616 R	16	16	7764038	7762161
SK 5400-2016 R	16	20	7764038	7762161
SK 5400-2520 R	20	25	7764038	7762161

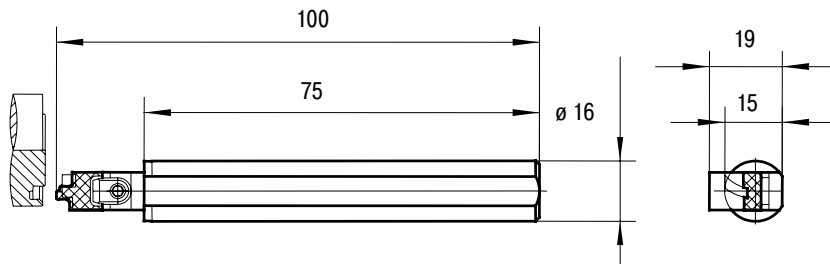
## Insert with 3 cutting edges



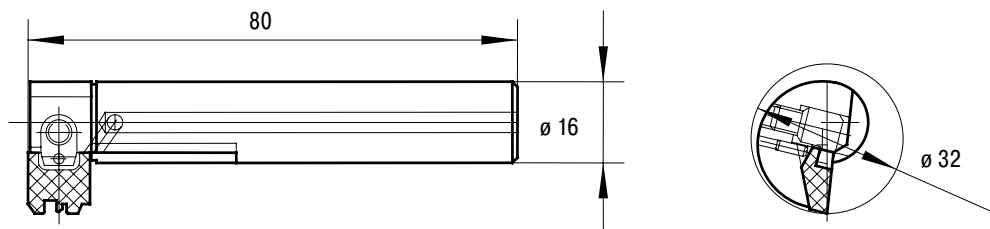
Order number	Dimensions [mm]	
	B1	IC-ø
SK 5401	4.76	9.52

## Special tools for flatform inserts

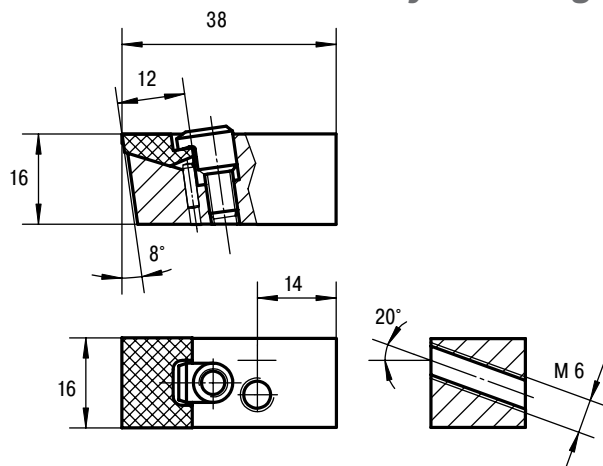
### Face grooving, holder with parallel shank



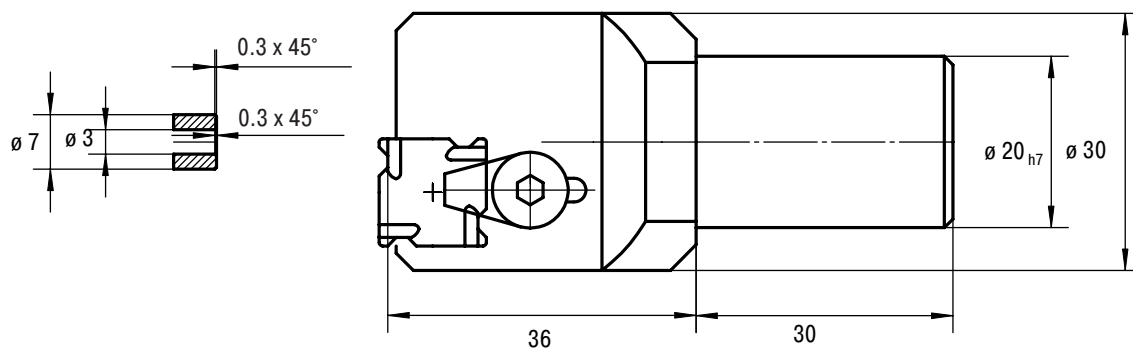
### Boring bar with profiled insert



### Basic-holder for rotary indexing systems

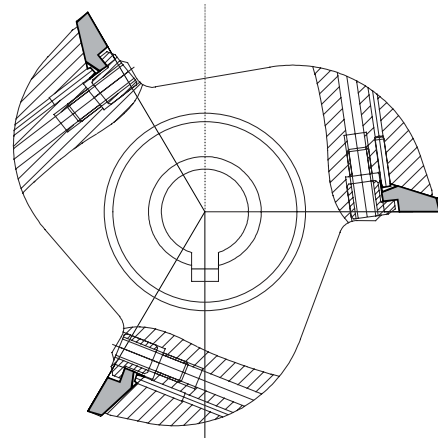




### Holder for tube contouring



## Polygon milling cutters

Offer to :
Company:
Street:
Zip-Code
Town:
Contact Person:
Department:
Phone:
Fax:
E-Mail:

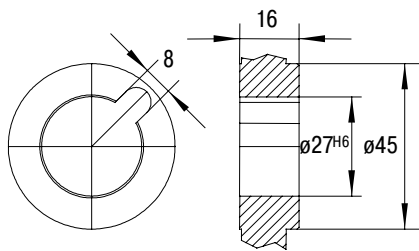


Numbers of inserts: <input type="checkbox"/> 1 <input type="checkbox"/> 2 <input type="checkbox"/> 3 <input type="checkbox"/> 4 <input type="checkbox"/> 5 <input type="checkbox"/> 6 <input type="checkbox"/> ___
Grooving width: _____ mm
Depth to groove: _____ mm
Width across flats to be made: _____ mm
Material to machine: _____
Diameter: <input type="checkbox"/> 56 <input type="checkbox"/> 60 <input type="checkbox"/> 63 <input type="checkbox"/> 64 <input type="checkbox"/> 70
<input type="checkbox"/> 72 <input type="checkbox"/> 74 <input type="checkbox"/> 75 <input type="checkbox"/> 80 <input type="checkbox"/> 85
<input type="checkbox"/> 86 <input type="checkbox"/> 90 <input type="checkbox"/> 98 <input type="checkbox"/> 118 <input type="checkbox"/> ___
Shank dimension:  see next page 
Grooving: <input type="checkbox"/> yes (side clearance angle required) <input type="checkbox"/> no
Design with exchangeable cartridge for inserts <input type="checkbox"/> yes <input type="checkbox"/> no
Pieces of milling cutters: _____
Pieces of inserts: _____
Other information:



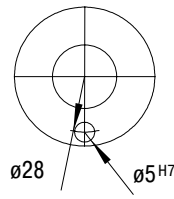
## Shank Dimensions polygon milling cutters

### Index



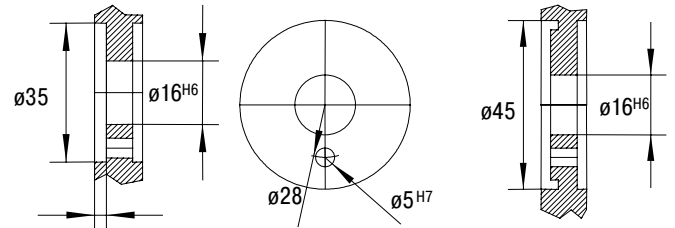
ABC

### Index



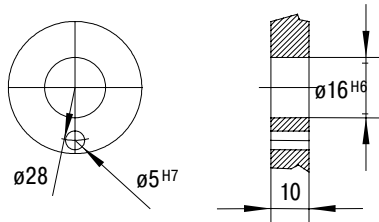
MS, B, GB 30

### Index



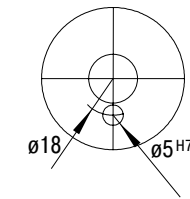
KS, GB 65

### Index



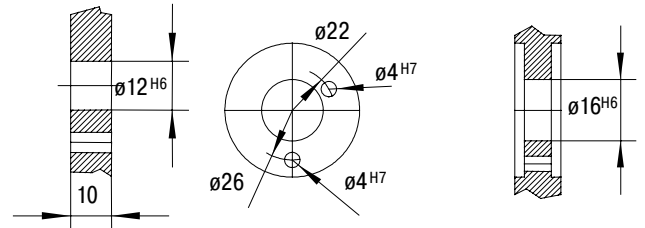
C, ER 16, ER 25  
GB 42, DG, DO

### Traub



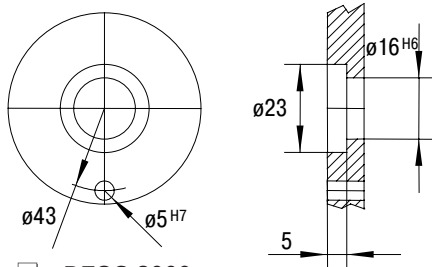
TB, TD, TNM

### Tornos



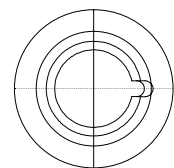
AS 14, SAS, BS

### Tornos



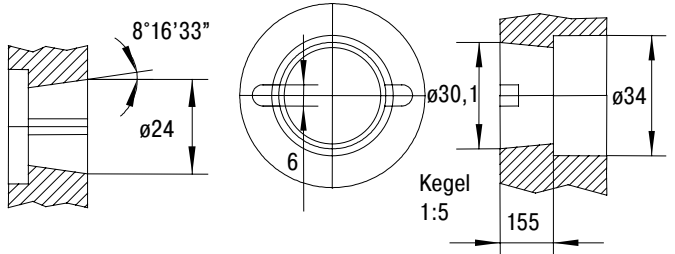
DECO 2000

### Tornos/Gildemeister

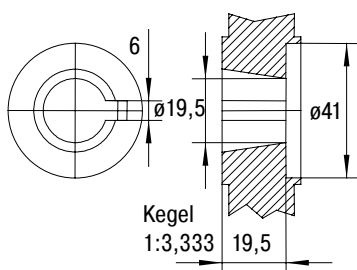


Multi DECO / GM 20

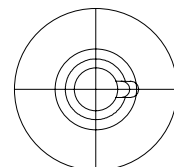
### Schütte



### Gildemeister

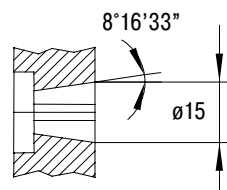


### Gildemeister



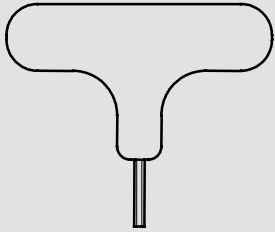
GM 16

### Other dimensions



(Please enclose drawing)

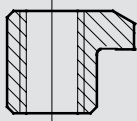
## Spare parts for flatform tool



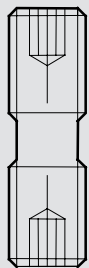
Allen key (SW 2.5)	Y 2119
Allen key (SW 3)	Y 9287
Allen key (SW 4)	Y 7111
Allen key (SW 5)	7770216



Allen key (SW 1.5)	9991570
Allen key (SW 2)	9991571
Allen key (SW 2.5)	7766828



Clamping device	Y 2162
Clamping device for width (B) 6	7900426
Clamping device for width (B) 8+10	7900385



Double setscrew L= 12,5	Y 2106
Double setscrew L= 15	Y 2101
Double setscrew L= 19	Y 2103
Double setscrew L= 24	Y 2104



Adjusting screw	M 5 x 30 DIN 913
-----------------	------------------

## Data sheet for profiled flatform tools



<b>Customer</b>	Date:
Company:	Contact Person:
Street:	E-Mail:
Zip Code:	Town:
Phone:	Fax:

### Tool information: (see pages 7-12)

**Basic holder:** H 30 \_\_\_\_\_ pieces: \_\_\_\_\_  
 Shank type cutting holder     INDEX-Holder     SCHÜTTE Holder     TORNOS Holder

**Platform insert:** W 30 \_\_\_\_\_ pieces: \_\_\_\_\_  
 height 3 mm     height 7 mm     height 8 mm

**Tolerance** (for tolerated dimensions):  ± 0.01     ± 0.03     ± \_\_\_\_\_  
 Grade of carbide     K10F     \_\_\_\_\_ Coating:  yes     no

### Additional Informations:

**Manufacturer of machine:** \_\_\_\_\_ **Rough machine:** \_\_\_\_\_

**Type of machine:** \_\_\_\_\_ **Finishing:** \_\_\_\_\_

**Spindle position:**  1  2  3  4  5  6  \_\_\_\_ **Direction of grooving:**  radial

**Spindle speed:** \_\_\_\_\_ rpm  axial

**Feed:** \_\_\_\_\_ mm per rev.  Internal grooving

**Direction of rotation**  
 Right     Left

**Position of tool**

Tool holder reversed

**Drawing number:** \_\_\_\_\_

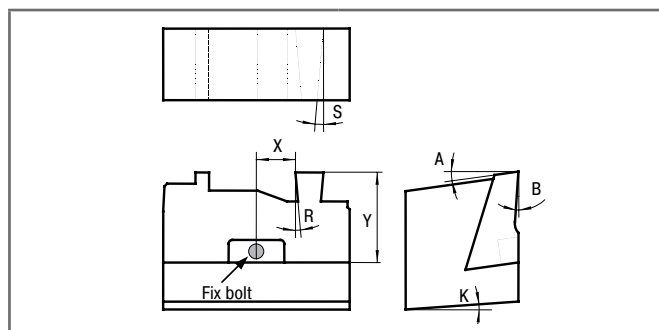
**Please mark the profile be machined!**

**Side for parting of:** \_\_\_\_\_

**Please mark the drawing with "XXX"!**

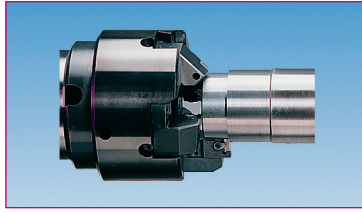
**Width for parting off:** \_\_\_\_\_ mm

**Material:** \_\_\_\_\_



<b>A =</b>	Front relief angle:	_____ °
<b>B =</b>	Effective rake angle:	_____ °
<b>S =</b>	Side clearance:	_____ °
<b>R =</b>	Radial relief angle	_____ °
<b>K =</b>	Tilt angle (tool in the machine):	_____ °
<b>X =</b>	Position to the bolt:	_____ mm
<b>Y =</b>	Max. length of insert:	_____ mm

## Product Range



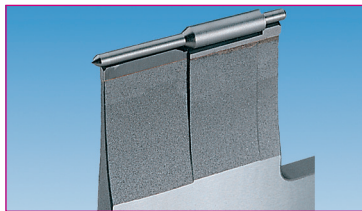
### End Finishing Tools

- Up to 5 Working Operations In Only one Working Cycle
- Modular Construction System
- Large Variety of Stock Articles
- Facing, Chamfering, Longitudinal Turning, Boring, Centering, Convex Turning of Face



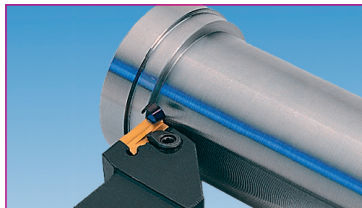
### Flat Form Tools

- Structural Dimensions Various Types from Stock
- Flatform Change Insert
  - non Profiled
  - Profiled According to Customer's Specification
- For all Single- and Multi-Spindle Automatics
- Grinded Insert Seat
- Turning Tools
- Cutoff Tools



### Supporting Bars

- For all Centerless Circular Grinding Machines
- Grooving Rails
- Dressing Templates
- Thread Roll Supports
- Support Rails for Throughfeed Grinding
- Prism Rails
- Guide Plates
- Special Cutters
- Paper Cutter

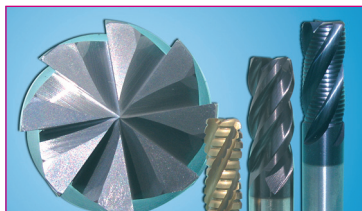


### Turning Tools

- Turning Chisel/ Boring Bars
- Thread Turning Tools
- Copy-Turning Tools
- Special Turning Tools acc. to Customer's Specification

### Cutoff Tools

- Grooving
- Parting



### Carbide Drills and Milling Cutters

- Drills
- Profile Cutter
- Flat Drill
- Finishing Cutter
- Ball End Mill
- Roughing Cutter
- Stepped Tools / Countersink
  - Coated /Uncoated
  - Carbide or HSS



### Leistritz-Profil-Center

- We Design Flatform Tools with Profiled Indexable Cutting Inserts
- Highest Precision and Quality
- Fast and Economic
- E-Mail: [profil-center@leistritz.com](mailto:profil-center@leistritz.com)

**Nuremberg plant:**  
**LEISTRITZ PRODUKTIONSTECHNIK GMBH**  
Markgrafenstraße 29-39 · D-90459 Nuremberg  
Phone: +49 9 11 / 43 06 - 350  
Fax: +49 9 11 / 43 06 - 300  
E-Mail: [profil-center@leistritz.com](mailto:profil-center@leistritz.com)  
■ [www.leistritz.com](http://www.leistritz.com)



**Delivery address:**  
Leistritz Produktionstechnik GmbH  
Leistritzstraße 1-11  
D-92714 Pleystein