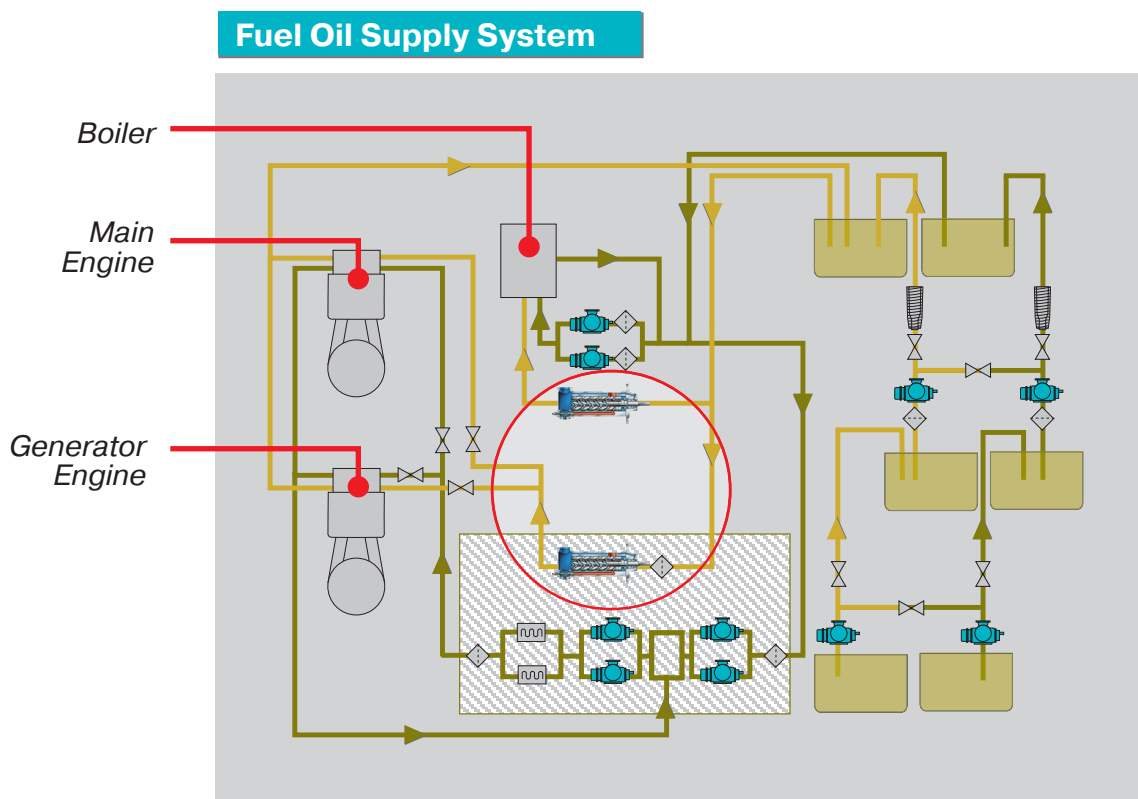




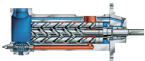
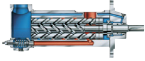

Leistritz Screw Pumps for Low Sulphur Fuel Oil (LSFO)

New Environmental Regulations for Fuel Oil Since 1st January 2010!

- The sulphur content of marine fuels used by ships in EU ports should be maximum 0.1 % by mass according to EU Directive 2005/33/EC

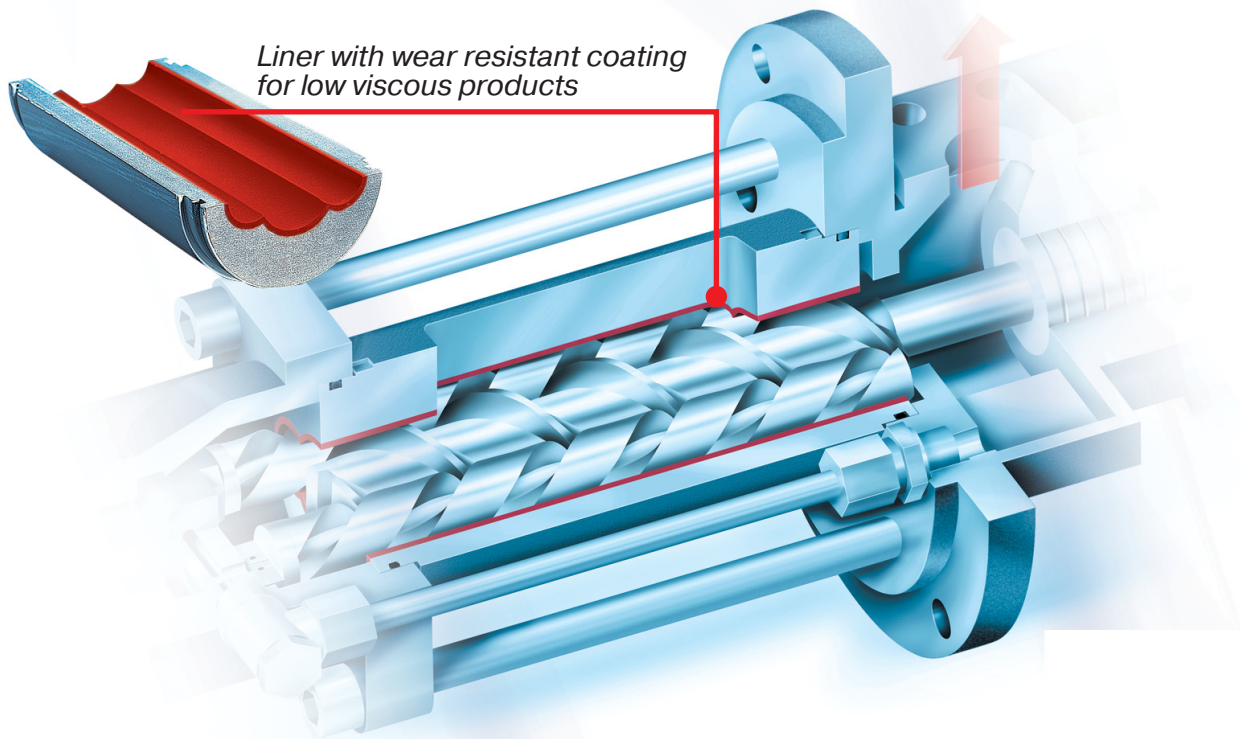


oversimplified illustration

-  Leistritz DO Supply Pump L3MF
-  Leistritz DO Boiler Supply Pump L3MF
-  Other Leistritz Screw Pumps



L3MF



Performance Data

Application:	Supply pump for diesel engines and boilers
Fluid:	Low sulphur fuel oil (LSFO)
Viscosity:	Down to 1,5 cSt. @ 40°C Temperature (max. operating temperature 80°C)
Pressure:	Up to 30 bar
Pump Type:	L3MF-.../...-AFOKUI-G
Material:	GGG40 (0.7040) with wear resistant coating of pump liner

Sectional Drawing

