

## Quality, Innovation and Service since 1905

Based in Nuremberg, the Leistriz Group has been at the forefront of mechanical engineering since its inception more than 100 years ago. Today, the group of companies consists of four operating entities, including *Leistriz Pumpen GmbH*. Formed in 1924, Leistriz Pumpen specialises in designing groundbreaking screw pumps and systems manufactured to the highest quality.



Mr. Jörg Narewski  
Managing Director of Leistriz  
Pumpen GmbH

The Leistriz story started in Nuremberg in 1905. It was at this time that Mr. Paul Leistriz set up Maschinenfabrik Paul Leistriz for producing blades for steam turbines. Through its commitment to innovation, the company continually developed its offering throughout the decades. The first major breakthrough came with the introduction of the world's first screw pump with two spindles for numerous industrial applications. 1937 was the year when Leistriz launched extruders for kneading and mixing tough materials in plastics processing. In the

1960's, it commenced with the manufacture of hydraulic installations for elevators.

Leistriz Corporation was the first subsidiary of Leistriz, founded 1973 in Allendale, New Jersey, USA. In the next few years, Leistriz extended its portfolio with the inclusion of tool machines and production technology. In 2001, Leistriz was reorganised. Subsequently, a number of independent operations were established. Those being today's Leistriz Turbomaschinen Technik, Leistriz Extrusionstechnik, Leistriz Produktionstechnik, and Leistriz Pumpen.

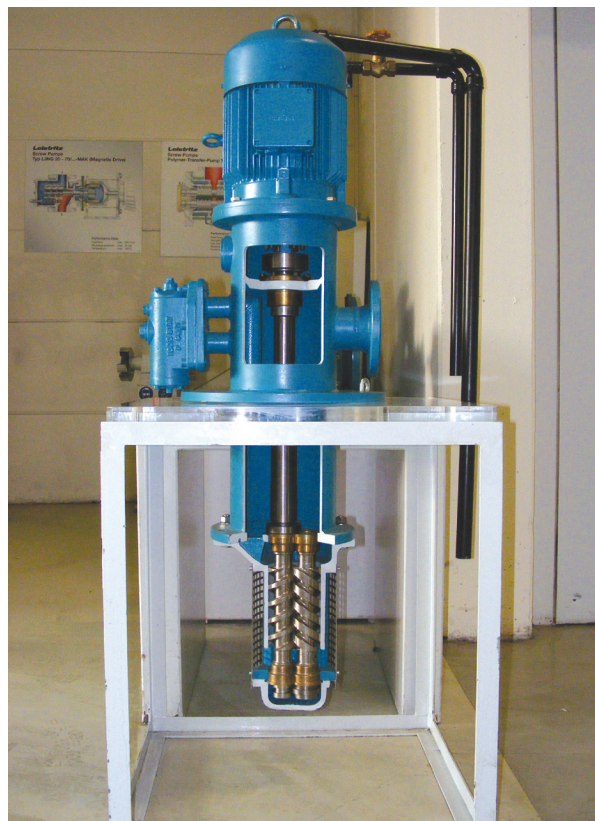
able partner when it comes to designing and manufacturing bespoke screw pumps and systems.



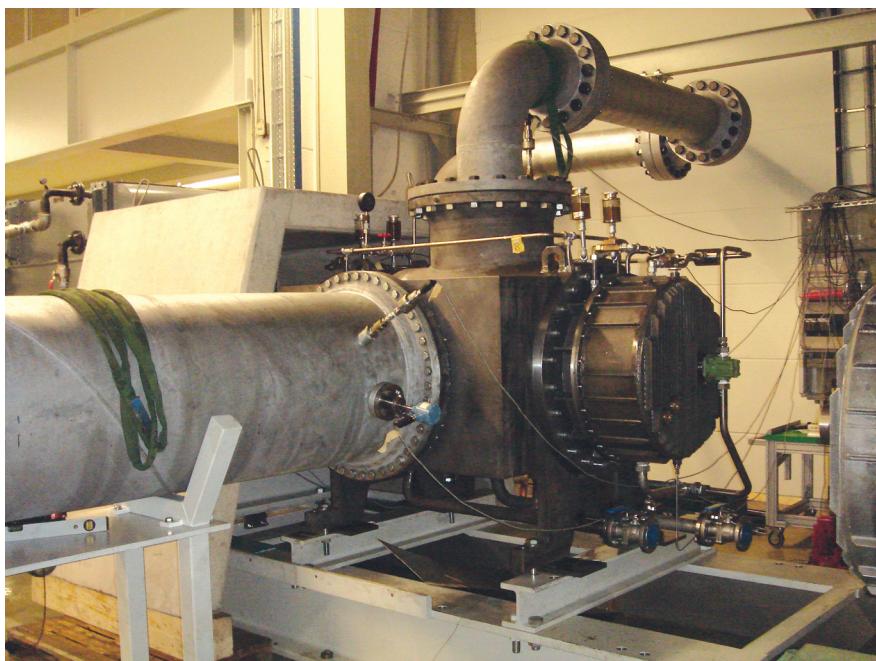
**Leistriz**  
LEISTRIZ PUMPEN GMBH

Each operation focuses on its own core competence: Leistriz Turbomaschinen Technik focuses on manufacturing blades for turbines and compressors; Leistriz Extrusionstechnik specialises in producing extruders and extrusion lines; Leistriz Produktionstechnik focuses on tooling machinery and production technology; while Leistriz Pumpen is an indispens-

The entire group of companies currently employs 2,000 members of staff and runs state-of-the-art production plants in Nuremberg, Remscheid and Pleystein. In addition, the global player operates subsidiaries in Singapore, the USA, Switzerland and Italy. In order to take care of its international customers, the business operates a network of branch offices and representations in more than 90 countries.



The company launched the world's first  
2-spindle screw pump in 1924



Leistrizt Pumpen equipped Universal Terminal in Singapore with the world's largest screw pumps

Leistrizt Pumpen generates a high percentage of its annual turnover with the design and production of standard and customised marine screw pumps. Mr. Narewski continues: *“Our L2, L3, and L5 screw pumps have been created for marine applications, while our L4 models are predominantly used in the oil and gas industry and refineries.”* However, it goes without saying that almost all L2, L3, L4, and L5 screw pump variants can also be employed in chemical plants, pulp and paper plants, power plants,

*“With 300 members of staff, Leistrizt Pumpen is ranked among the world's largest and leading manufacturers and suppliers of screw pumps,”* tells us Mr. Jörg Narewski, Managing Director of Leistrizt Pumpen. *“Our products are exclusively designed and produced in Nuremberg. We are in the fortunate position of being able to offer our customers unparalleled know-how and quality that is ‘made in Germany’.”*

The product portfolio consists of a vast range of screw pumps all of which are unrivalled in the industry. The self-priming, rotary-displacement pumps are distinguished by maximum efficiency, low noise levels, and long service lives and fully meet the expectations of the different industries. The screw pumps assortment comprises pumps

and complete pump systems suitable for various duties and materials as well as a variety of installation types. They see service on ships, oilrigs, power stations, refineries, and in the chemical industry. Here, Leistrizt screw pumps are utilised to pump, transport, meter, and mix both well lubricating and abrasive fluids.

*“We offer an extensive screw pumps programme covering 2 (L2), 3 (L3), 4 (L4), and 5 (L5)-spindle pumps with inner and outer bearings,”* says Mr. Narewski, describing the product portfolio. *“In addition, we are a leading contact when it comes to designing, installing, and commissioning complete pump systems; moreover, we provide automotive fuel pumps and meters for petrol stations.”*

**Leistrizt Pumpen GmbH**  
**Markgrafenstrasse 29-39**  
**90459 Nuremberg**  
**Germany**



Leistrizt lube oil transfer pumps are used for lubricating marine engines

hydraulics, food and textile processing plants, sugar refineries, and plants for producing dyes and printing ink.



**Leistriz**  
LEISTRITZ PUMPEN GMBH

Leistriz screw pumps are the first choice among manufacturers and operators of cruise liners, containerships, tankers, frigates, and corvettes. In this segment, the portfolio encompasses special pumps for lube oil and fuel oil systems, steering gears and

the ship engine. The most important task, however, is to ensure the constant and reliable lubrication of the entire diesel engine in order to guarantee maximum performance and a long service life. The company's transfer pumps for lube oil are available in foot, flange, and pedestal versions for horizontal or vertical installation.

The screw pumps making up the L4 series are employed for loading and unloading tankers, and are used for handling a wide range of fluids from low viscous diesel oil to high



The global player achieves a high percentage of its annual turnover with screw pumps for marine applications

propellers, winches, the loading and unloading of cargo, and many other marine applications. Screw pumps for lube oil transfer, for example, have to fulfil a variety of tasks around

viscous bitumen or molasses. The design of cargo pumps ensures low noise levels during operation and almost pulsation free delivery. Using frequency controlled motors, the de-



Cargo pumps are employed for loading and unloading oil tankers

livery can be adjusted easily by changing the speed of the pump. Alternatively, Leistriz screw pumps can also be driven by means of hydraulic motors, diesel engines or even turbines. Their semi-submersible design makes the L4 screw pumps ideal for use as stripping pumps. The customer can choose from among a variety of high-quality pump casing materials, including cast iron, nodular cast iron, cast steel, and stainless steel.

*"Our pumps practically cover the entire supply chain, from the oil and gas exploration to the final consumption,"* as our interview partner emphasises. Leistriz screw pumps play an important role during

the entire oil and gas production process, whether it be onshore or offshore, including multiphase applications. Furthermore, they ensure the safe and reliable transfer and transport of crude oil to the refineries and finally to the tankers and pipelines.

Through its wealth of experience and expertise, Leistriz Pumpen has become a specialist for large-scale projects. In 2007, for example, it equipped Universal Terminal, which is one of the world's most important fuel depot based on Jurong Island, Singapore, with 33 large-scale screw pumps. The capacity of these double flow twin screw pumps ranges from 1,500 to 2,000 cmh at a

viscosity up to 3,000 cSt. The scope of delivery comprises preassembled complete systems, including pump, electromotor, and instrumentation mounted on a base frame. An integrated safety valve protects the pumps from excessive pressures in the piping, thus guaranteeing maximum performance and maximum safety.

Leistritz Pumpen exports up to 60% of its products predominantly to Europe, Asia and the Americas. Major customers include the oil and gas industry, plant construction firms, shipbuilders, diesel engine manufacturers, power plant operators, chemical com-

*Dow Chemical, Hoechst, Shell, Texaco, ExxonMobil, Chevron and Petrobras, to name but a few examples,”* enumerates the managing director.

The enterprise is currently involved in other

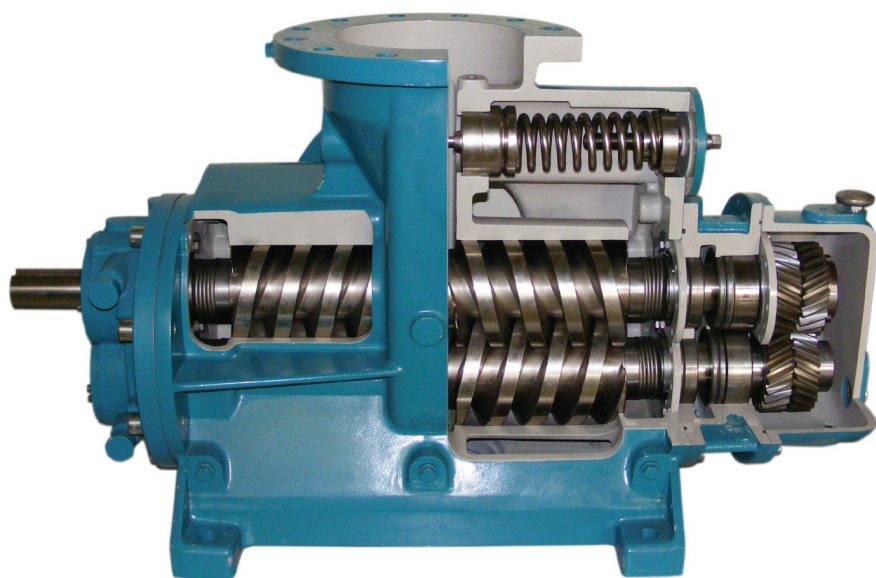
multiphase pump systems for oil and gas productions.

In a bid to promote the numerous advantages of its products, Leistritz Pumpen participates in a wealth of trade fairs, including the AICHEMIA in Frankfurt am

Main, AOG in Perth, Europort in Rotterdam, Marinotec in Shanghai, OTC in Houston, Offshore Europe in Aberdeen, Mioge in Moscow, etc. In the coming years, the company expects a continuing high demand for its complete pump systems. *“In view of this, we will continue to optimise and extend our service portfolio in this area. This includes installation, commissioning, maintenance and support, and customer training services,”* concludes Mr. Narewski.



The headquarters and production plant have been located in the German town of Nuremberg for more than 100 years



The screw pumps making up the L4 series play an important role in the international oil and gas production industry

panies, etc. The list of references is impressive. *“We serve global players such as Wärtsilä, MAN, Caterpillar, Bayer, BASF,*

large-scale projects. In close collaboration with their international partners, Leistritz Pumpen is supplying the world’s largest



**Leistritz**  
LEISTRITZ PUMPEN GMBH

**Leistritz Pumpen GmbH**  
**Markgrafenstrasse 29-39**  
**90459 Nuremberg**  
**Germany**